



express[®]

ACBS GMS # PBS #

Description

Food for special medical purposes.

TYR express[®] is an unflavoured powdered phenylalanine and tyrosine free, protein substitute containing essential and non-essential amino acids, carbohydrate, vitamins, minerals and trace elements.

Indications

TYR express is for the dietary management of Tyrosinaemia (TYR) from 3 years onwards.

Dosage and Administration

To be determined by the clinician or dietitian and is dependent on the age, body weight and medical condition of the patient.

TYR express15 (25g) = 15g PE[#] TYR express20 (34g) = 20g PE

The product can be used individually or interchanged to meet individual protein requirements.

1. The daily protein substitute requirement is given as TYR express.
2. Additional protein is provided from exchanges of natural protein, to provide restricted amino acids in controlled amounts, which is essential for growth and development.
3. Foods high in carbohydrate and fat, but low in protein, should be provided to supply the remainder of the energy

Preparation Guidelines

TYR express can be either taken as a paste, a mini (low volume) drink or as a flexi (dilute) drink.

For a paste:



Empty the contents of the sachet, plus a flavour pac sachet if desired, into the beaker.



Add approximately 10 - 20ml of cold water. Mix well with a spoon until a smooth paste is formed.



Consume immediately.

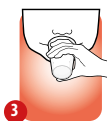
For a mini or flexi drink:



Empty the contents of the sachet, plus a flavour pac sachet if desired, into the beaker.



Add approximately 80 - 100ml (for mini drink) or as much cold water as desired (for flexi drink). Secure lid and shake well for 10 seconds.



Consume immediately.

Water or permitted drinks should be taken after TYR express.

IMPORTANT NOTICE

Must only be given to people with proven Tyrosinaemia under strict medical supervision.

Suitable from 3 years onwards.

Diet must be supplemented with natural protein, water and other nutrients in prescribed quantities to supply phenylalanine, tyrosine, fluid and general nutritional requirements.

Not for use as a sole source of nutrition.

For enteral use only.

Nutritional Information

		Per 100g	Per TYR express15 25g	Per TYR express20 34g
Energy	kJ	1260	315	429
	kcal	297	74	101
Fat	g	0.20	0.05	0.07
	of which saturates	g	0	0
Carbohydrate	g	13.7	3.4	4.7
	of which sugars	g	1.0	0.24
Protein (equivalent)	g	60	15	20
L-Phenylalanine	g	0	0	0
L-Tyrosine	g	0	0	0
Salt	g	1.3	0.32	0.44
Vitamins, minerals & trace elements				
Vitamin A (RE)	µg	832	208	283
Vitamin D	µg	13.2	3.3	4.5
Vitamin E (αTE)	mg	15.6	3.9	5.3
Vitamin K	µg	100	25	34
Vitamin C	mg	108.0	27	36.7
Thiamin	mg	2.0	0.50	0.68
Riboflavin	mg	2.3	0.57	0.78
Vitamin B6	mg	2.8	0.70	1.0
Niacin	mg (mg NE)	24.8 (51.6)	6.2 (12.9)	8.4 (17.5)
Folic acid	µg	400	100	136
Vitamin B12	µg	4.8	1.2	1.6
Pantothenic Acid	mg	8.0	2.0	2.7
Biotin	µg	188	47	63.9

Nutritional Information

		Per 100g	Per TYR express15 25g	Per TYR express20 34g
Sodium	mg	508	127	173
	mmol	22	5.5	7.5
Chloride	mg	728	182	248
	mmol	20.4	5.1	6.9
Potassium	mg	940	235	320
	mmol	23.6	5.9	8.0
Calcium	mg	1196	299	407
	mmol	30	7.5	10.2
Phosphorus	mg	1068	267	363
	mmol	33.6	8.4	11.4
Magnesium	mg	376	94	128
	mmol	15.6	3.9	5.3
Iron	mg	21.6	5.4	7.3
Zinc	mg	21.6	5.4	7.3
Copper	mg	2.2	0.55	0.75
Iodine	µg	252	63	85.7
Selenium	µg	88	22	29.9
Manganese	mg	3.2	0.8	1.1
Chromium	µg	88	22	29.9
Molybdenum	µg	144	36	49
Choline	mg	600	150	204
Amino Acids				
L-Alanine	g	4.24	1.06	1.44
L-Arginine	g	5.43	1.36	1.85
L-Aspartic Acid	g	8.40	2.10	2.86
L-Cystine	g	2.02	0.51	0.69
L-Glutamine	g	5.37	1.34	1.83
Glycine	g	4.42	1.11	1.50
L-Histidine	g	2.97	0.74	1.01
L-Isoleucine	g	4.93	1.23	1.68
L-Leucine	g	7.90	1.98	2.69
L-Lysine	g	5.62	1.41	1.91
L-Methionine	g	1.26	0.32	0.43
L-Proline	g	4.55	1.14	1.55
L-Serine	g	3.47	0.87	1.18
L-Threonine	g	3.79	0.95	1.29
L-Tryptophan	g	1.58	0.40	0.54
L-Valine	g	5.37	1.34	1.83
L-Carnitine	mg	64	16	22
Taurine	mg	132	33	45
Osmolality:				
TYR express15 25g + 80ml = 1896mOsm/kg				
TYR express20 34g + 80ml = 2380mOsm/kg				

Allergen Declaration

Contains soya (soya lecithin).

Pack Size/Weight

TYR express[®] 15

30 x 25g e sachets = 750g

TYR express[®] 20

30 x 34g e sachets = 1.02kg

Flavour:

Unflavoured

Storage

Store in a cool, dry place. Sachets are designed for single use and should be used immediately after opening. Any unused powder in an open sachet should be kept in an airtight container or sealed with a clipper and used within 24 hours.

